

CAREER COMPASS

Louisiana's Nonprofit Authority on College and Career Access



our **MISSION:**

To remove the obstacles that keep students from pursuing a post-secondary education.



our **VISION:**

To ensure every student has the opportunity to meet with a caring, knowledgeable college and career coach to help them overcome obstacles keeping them from post-secondary success.

providing a one-on-one **STUDENT FOCUS** for college and career

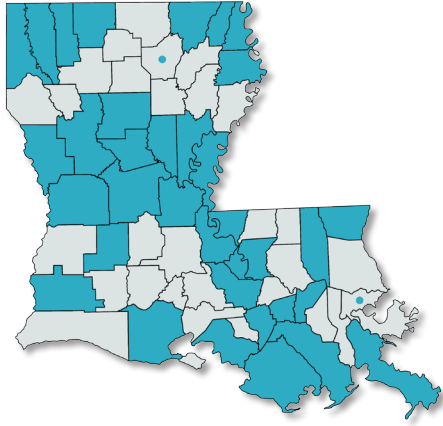
our **CALL TO ACTION:**

By 2022, we aim to be in every parish in the state, while deepening our footprint in the communities we already serve. **You can help by being:**

- **Our champion in your community.** Help us generate awareness for our cause and the impact we generate for students in your area.
- **A voice for your community.** Bring community feedback to us and help us assess and meet changing community, business, and workforce needs.
- **A connector.** Help us develop community connections and new partnerships by leveraging your network.
- **A fundraiser.** Encourage others to contribute funding or help us improve our funding model.
- **A host.** Help us host an outreach event, training event, or fundraiser.
- **A funding partner.** Donate to a school, district, or region of the state.



Where We Are



184 Louisiana public schools served

38 school districts across Louisiana

78 coaches with **60** hours of annual training each

What We Do

Every service we offer is focused on supporting and empowering students to identify and overcome obstacles to post-secondary education. Obstacles take many forms such as financial needs, insufficient academic records, lack of knowledge about career options, and misunderstanding of deadlines, nearly all of which can be overcome.

We address obstacles in real-time for 12th grade students through one-one-one college and career coaching. We also proactively address potential barriers (before they become stumbling blocks) for 6th–11th grade students.

We connected with **35,324** middle and high school students in **38** districts during the 2016-17 school year.

For the 2016-17 school year, **11,889** Career Compass seniors applied to a post-secondary school.

76,599

Career Compass seniors have applied to post-secondary schools since 2006.

For the 2016-17 school year:

22,540

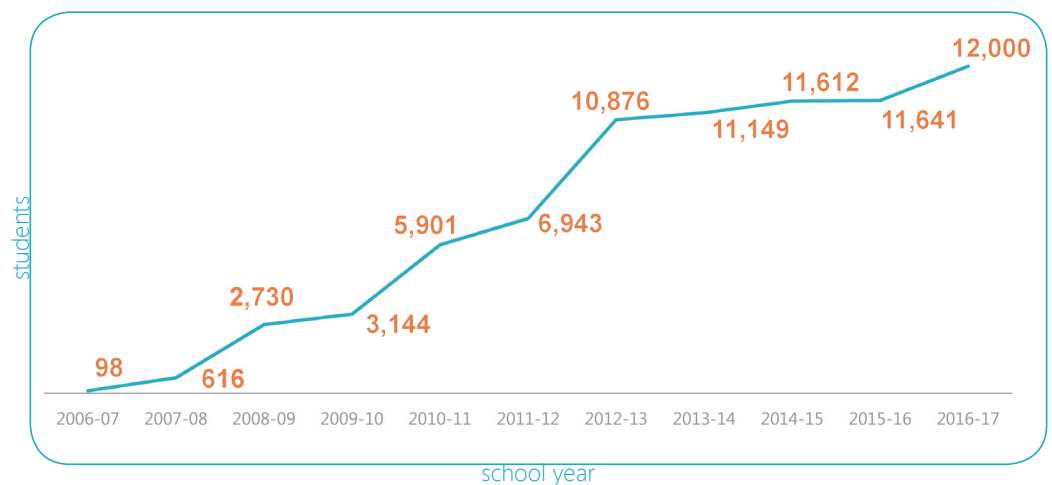
6th–11th grade students improved their college and career knowledge

1,846

college and career awareness seminars were provided

3,713

9th and 10th grade students were mentored on Jump Start college and career pathways



Community by community, we're partnering with districts to increase post-secondary enrollment. **And it's working!**

We Unlock Resources for Students

Identifying and pursuing financial assistance for disadvantaged students is a unique advantage to partnering with Career Compass. We have helped students cover:

\$107,369 in savings to our students for **2,541** ACT test fees covered or waivers secured by Career Compass.

\$18,547 in savings to our students for **1,052** college application fees covered by Career Compass or waived by our partners.



Nationally, **90%** of high school seniors who complete the FAFSA proceed directly to college versus only **55%** who don't complete the FAFSA.

For the 2016-17 school year, **65%** of Louisiana high school seniors submitted FAFSA, up from **58%** for the 2015-16 school year. This is historically high for Louisiana.

Career Compass served **6** of the **10** Louisiana school districts with the highest FAFSA completion rates. The top two districts greatly exceeded the state completion rate (65%), and are our partners.

We Collaborate for a Greater Impact

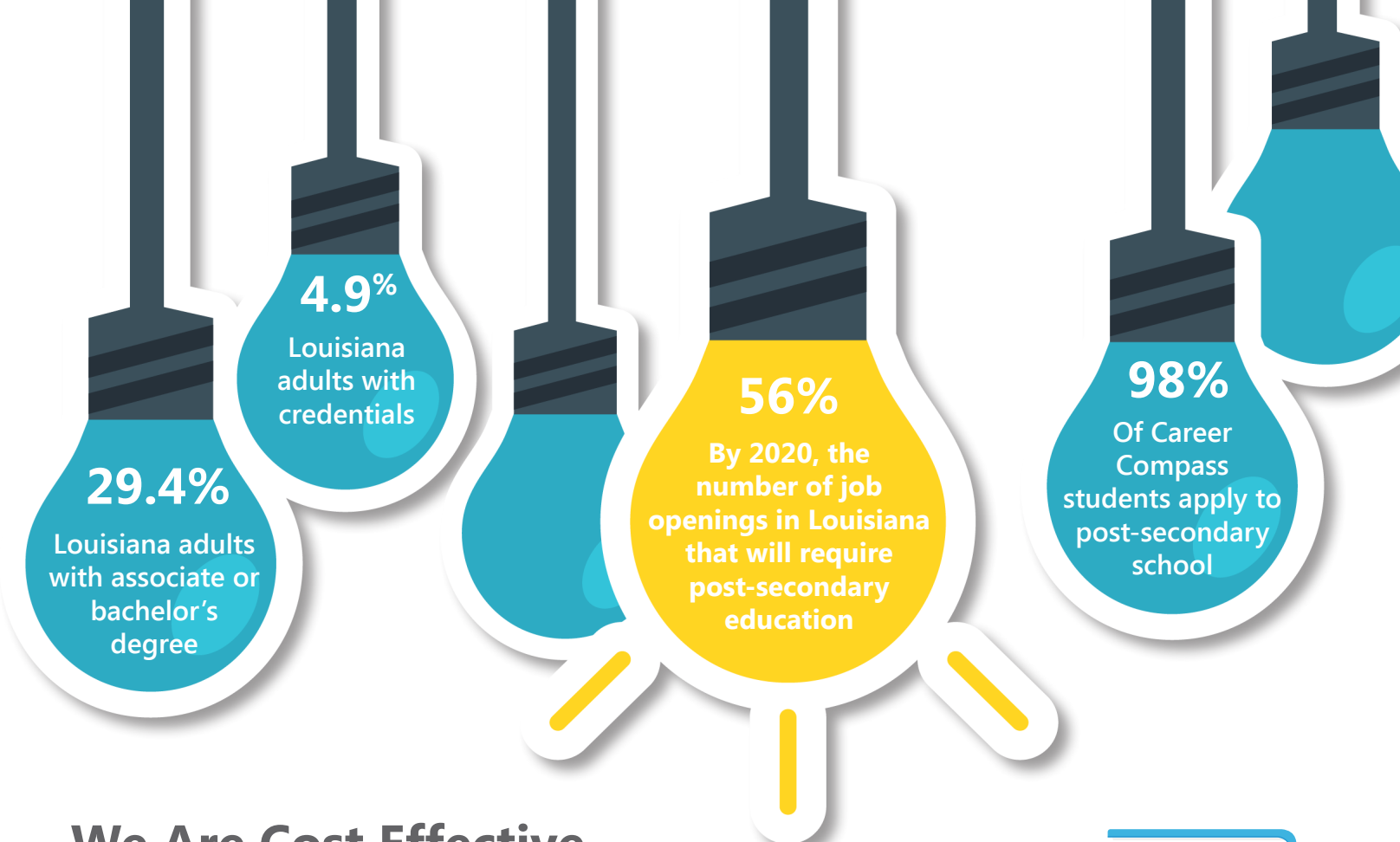
Career Compass is committed to serving high school students at no cost to them or their families. We are able to do this because we rely on a mix of support from partners that believe, like we do, that effective college and career coaching should be widely available to all students. We partner with school districts, post-secondary systems, corporate and private philanthropy, and individuals.



Every Student. Every Community. Transforming lives through the power of education.

Top 10 Louisiana School Selections by Career Compass Students:

1. Baton Rouge Community College
2. Bossier Parish Community College
3. Northwestern State University
4. Louisiana Tech University
5. Louisiana State University
6. Nicholls State University
7. University of Louisiana at Monroe
8. University of Louisiana at Lafayette
9. Southern University at Baton Rouge
10. Southeastern Louisiana University

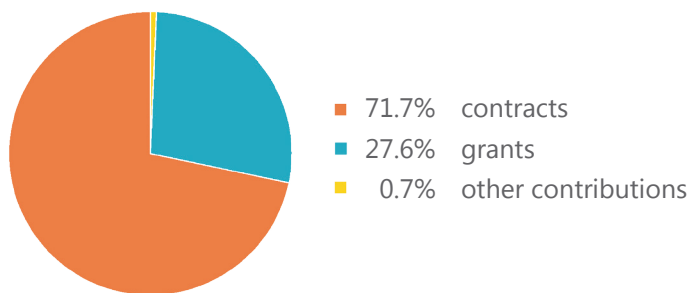


We Are Cost Effective

It only costs us **\$110** to provide college and career coaching to one high school senior. Seminars for 6th–11th grade students, Jump Start coaching, and FAFSA coordination have a lower per student cost, and increase the impact of one-on-one coaching.

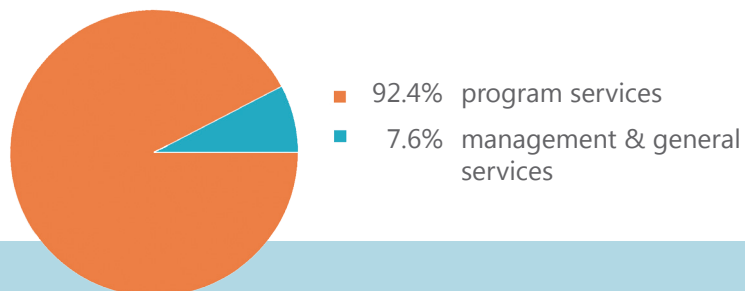
Our financial resources come from:

sources of revenue



We make our dollars count:

expenditures



Career Compass is a tax-exempt charitable organization under IRC (501)(c)(3). We accept donations, grants, and sponsorships. All figures represent Career Compass' most recently audited financial statements.

Where our students apply:

- 42%** four-year college or university
- 43%** technical or community college program
- 16%** private, military, or out-of-state
- 75%** remain in their programs the first year

percentages rounded to nearest 100th

An impact study on Career Compass was conducted by Dr. Stephen Barnes of Louisiana State University. The study concluded that students who were Career Compass coached are more likely to enroll in a post-secondary institution. Compared to other college access programs, Career Compass ranks as one of the highest performing programs from a cost-benefit standpoint.



showing the way for students every day



www.CareerCompassLA.org